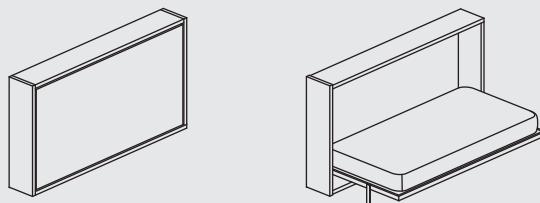




POPPI go/120
design r&s clei

Transformable system composed by a tilting bed always ready to use with slatted bed base. This model is available either with single bed (Poppi go) or with intermediate bed (Poppi 120).

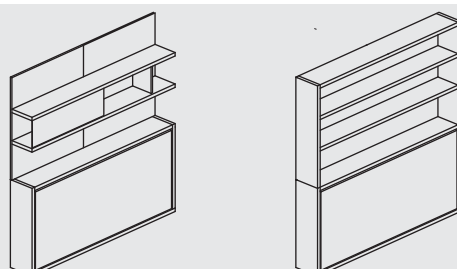
Dimensions:
Closed 1023-1268 x 2160 x 310 mm
/ 40.3-50 x 85 x 12.2 inches
Open 1023-1268 x 2160 x 1005/1242 mm
/ 40.3-50 x 85 x 39.6/48.8 inches
Mattress 1970 x 850-1090 x 180 mm
/ 77.6 x 33.5-42.9 x 7.1 inches
Height of bed base from the floor 259 mm / 10.2 inches



POPPIBOOK
design r&s clei

Transformable system composed by a roomy bookcase and a tilting single bed.

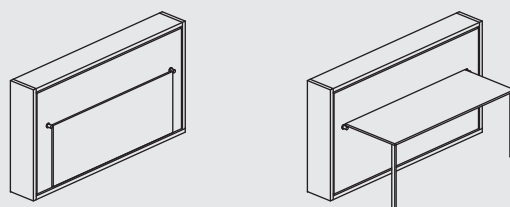
Dimensions:
Closed 1023x 2160 x 310 mm
/ 40.3x 85 x 12.2 inches
Open 1023x 2160 x 1005 mm
/ 40.3x 85 x 39.6 inches
Mattress 1970 x 850x 180 mm
/ 77.6 x 33.5x 7.1 inches
Height of bed base from the floor 259 mm / 10.2 inches



POPPIDESK
design r&s clei

Transformable system composed by a tilting bed always ready to use with slatted bed base, and a tilting table. This model is available either with single bed (Poppi go) or with intermediate bed (Poppi 120).

Dimensions:
Closed 1023-1268 x 2160 x 310 mm
/ 40.3-50 x 85 x 12.2 inches
Open 1023-1268 x 2160 x 1005/1242 mm
/ 40.3-50 x 85 x 39.6/48.8 inches
Mattress 1970 x 850-1090 x 180 mm
/ 77.6 x 33.5-42.9 x 7.1 inches
Height of bed base from the floor 259 mm / 10.2 inches
Table 1700 x 660 x 19 mm / 66.9 x 26 x 0.7 inches

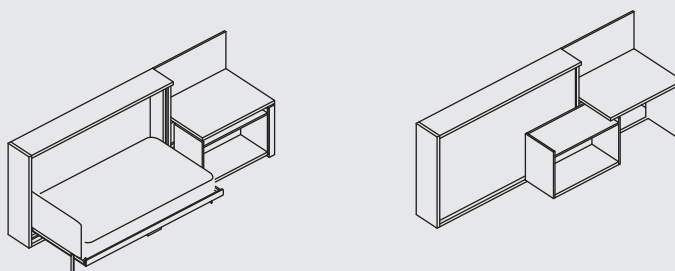




POPPI SD
design giulio manzoni/pierluigi colombo

System composed by an horizontal single bed with tilting opening system and slated bed base, a fix desk and a sliding element equipped for PC.
This model is available either with single bed (Poppi go) or with intermediate bed (Poppi 120).

Dimensions:
Writing desk 900-1080-1260-1440 x 818 mm
/ 35.4-42.5-49.6-56.7 x 32.2 inches
Height of wr.desk from floor 726 mm / 28.6 inches



TECHNICAL INFORMATION

Wooden Structure with adjustable nylon feet.

Bed base with frame in tubular enforced iron and multilayer bent beech wood slats, fixed to the frame with nylon/rubber gaskets.

Mattress: spring mattress, Reinforced Latex mattress, 50% Memory mattress. Mattress locking belts in nylon with fastener in black nylon

Opening mechanism through gas springs

Available Finishes: Structure : Melamine White Dover, Melamine Whited Oak or Gaphite Oak, Lacquer Clei colours system.

Front panels: Melamine White Dover, Melamine Whited Oak or Graphite Oak, Lacquer Clei colours system . Glossy white Dialux Wood Whited Oak or Graphite Oak, multicolor lacquer, lacquer + pattern. Back panels always in Melamine White

REMARK - INSTALLATION AND SAFETY

The said models are supplied disassembled and the easy installation is supported by comprehensive instructions.

It is compulsory to fix them to the wall, in 2 fixing points, using the proper hardware supplied by CLEI (squares, rawplugs with diameter 9mm/0.4 inches and the couple nut-bolt)) and following the assembling instructions provided together with the goods

A plasterboard is not a suitable wall so the fixation can not be considered safe (see assembling instructions).

The installer is in charge to test the correct fixing and to provide with a workmanlike installation

The opening system is fixed to the structure with gears that remain perfectly tighten in both the day and the night positions.

Maximum weight supported by the table: kg. 50

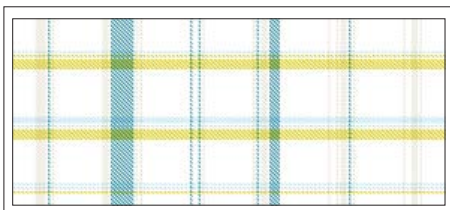
Maximum weight supported by the bed: kg. 150

PATTERN

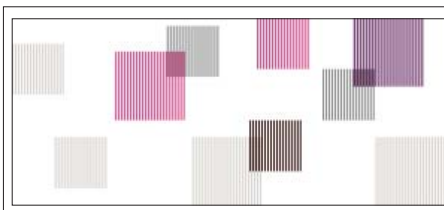
Made only on a lacquered white dover panel and in clei pattern colours combinations.

For the model Lollisoft SD the pattern is available only for the upper panel.

SCOT



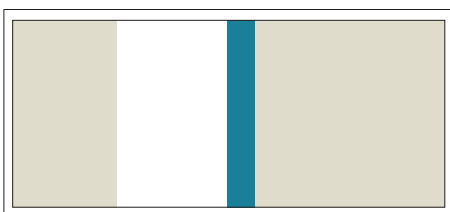
QUADRA



PETALO



MULTICOLOR



MULTICOLOR/OVAL (available on any sections)

